

TIDEWATER BIG TRAIN OPERATORS CLUB

GULL



The Gull is the official monthly newsletter of the Tidewater Big Train Operators Club, Inc. Dues are \$30.00 payable on June 30th, yearly. Submit item for inclusion NLT the 20th of each month. We'll take anything. Typos & misspelled words are intentional to help keep the members awake when reading the newsletter

VOLUME 15

APRIL 2014

President: Jerry Kay, 397-1426, eph52@verizon.net;
Vice President: Suzanne Durbin, 407-4455, zaknmaggie@verizon.net ;**Secretary:** Sherry Caldwell, 490-2155, slocva@cox.net; **Treasurer:** Pat Jennings, 479-4157, pljennings@cox.net
Advisors: Talmadge Piland, 581-2353, lgbtal@verizon.net. **Teya Caple-Woods**, 436-7225, tcaple_w@hotmail.com. **David Caldwell**, 490-2155, slocva@cox.net
Editors: Teya Caple-Woods 436-7225, tcaple_w@hotmail.com. **Assistant:** Sherry Caldwell 490-2155, slocva@cox.net.
Librarian: NEED
FACEBOOK:
<http://www.facebook.com/groups/115824558135>
WEB ADDRESS: WWW.TBTO.ORG
Webmaster: Bill Dora; bdora@cox.net

MEETINGS & EVENTS

APRIL 12, 2014 MEETING AT BOB & LAURA GIFFORD IN YORKTOWN. TRAINS RUNNING AT 11AM. BRING CHAIRS AND WEAR STURDY SHOES

APRIL 26-27, 2014 WHITE'S NURSERY/SET-UP APRIL 25TH MEETING AT WHITE'S APRIL 13TH /11AM TO DISCUSS LAYOUTS

MAY 17, 2014 MEETING AT AL & GERALDINE ONLEY. TRAINS RUNNING AT 10AM/LUNCH AT NOON

JUNE MEET AT BECKY & MARK JUNGHANS. MORE INFORMATION NEXT ISSUE

Women & Railroads - The men who owned, built, and ran the railroads were often single-minded in their pursuit of money and power, and were not inclined to hire women to do jobs that were, during the 1830's, the exclusive province of men. Women could not vote or even own property in their own names, and the idea that they could do "men's" jobs produced just as much skepticism as this new form of transportation. Women faced a long and difficult struggle



INSIDE THIS ISSUE

- 2 MEETING NOTES
- 3 PREZ CORNER
- 4 -7 COMING EVENTS
MEMBERS NEWS
- 8-10 ECLSTS IN YORK
- 11-13 WOMEN IN RAILROADING
- 14 NOTE FROM MD TRAINS
ANSWER TO RAILROAD
QUIZ



www.polksgenerationext.com

Hi Everyone,

If you haven't seen it all ready, www.polksgenerationext.com, is up and live. The response has been overwhelming and looks to continue that way. The site is built to help grow the entire G Scale Industry. Not just our little part in it. Built to attract anyone that searches any subject related to trains to it and with your help it will work even better. Phase 2 is almost done but would like your help to finish it. We are adding a very extensive G Scale Club Locator which will help people from all over the country locate a G Scale Club closest to the Zip Code they enter. Here is the best thing. It doesn't matter if you run our product, Bachmann or even LGB. We just want people to be able to find a Club to join or even just to visit to see what it is all about. Help them find you and the Joy of G Scale Trains. So, if you belong to a Club and would it to populate our Club Locator, just reply to this email with how you would like your Clubs Basic information to appear. Thank you for helping me help you and the Industry. OH YEAH, don't forget that you receive FREE SHIPPING on your first order from our website. Coupon Code: launch then after your first order, receive an email from us with a coupon for your second order.

Best Regards,
Scott Polk

MEETING NOTES

The March TBTO meeting was hosted on March 13, 2014 by Jerry and Verna Kay at the Liberty Fellowship Church in Portsmouth. Twenty members were present. We want to thank Jerry and Verna for hosting....THANKS.

- Treasurer's report given by Pat Jennings. The club still has money.
- Set up at Wilroy Baptist Church had 16 members present. 6 trains were running. Many church members and area neighbors attended.
- April 12, 2014 meeting at Bob and Laura Gifford. Trains running at 11AM, with lunch and meeting to follow. Wear sturdy shoes. Their layout is in a forest.
- White's nursery set up is April 25 with running on April 26/27 from 10-4 PM. Meet at White's on April 13 at 11 AM to pick out your area.
- May 17, 2014 TBTO meeting at Al and Geraldine Onley. Trains running at 10 AM with lunch at 12 and meeting to follow.
- Spencer, NC Railroad Transportation Museum is hosting their Streamline event on May 29-June 1. More info: www.nctrans.org
- Carl Jennings made a Trifold Ad Board promoting our club. Several pictures of past shows and members layouts are displayed. Items can be updated as needed. Thanks Carl for the Display Board...GREAT JOB!
- Tweetsy Railroad set will be purchased for our raffle this year. Toby the Tram will not be purchased at this time.
- Norfolk Botanical Gardens has shown an interest again to have a garden layout. A meeting will be forthcoming with their wishes.
- Teya brought several boxes of parts that got 'grabbed up' by members.

PREZ CORNER



Last month, I took the opportunity to write about the reasons for our successes at train shows which I summed up by recognizing our combination of experience, dedication, and camaraderie. This month, I'm going to look at some of the specific processes that go in to putting on a successful display.

Every good display begins with a good plan. We start by considering the available space that we have to work with, the number of people who will be available to do the setting-up, and the amount of time we have to do the set-up. People plus time plus available space equals the size and complexity of our displays. When those factors are considered, we can create a plan for the particular layout

The whole process is eased by the use of standard layout design elements or LDEs, otherwise known as prefab layouts. TBTO uses several versions' of folded dog-bone, hourglass, and folded figure eights to make filling the available space easier. These LDEs can be moved, twisted and rotated as necessary to populate the available space. Club members will often volunteer (aka "claim") to decorate a particular section with their own buildings and trains.

Before we started using these predesigned layouts, our primary design element was concentric ovals of track. These were fun, but the new shapes really add visual interest to the layouts we build. I love watching the trains as they weave in and out of the scenery.

There is one more thing to consider. That is – how will we access the space in the event that something goes wrong, and something will go wrong! Trains will derail, usually at the worst possible spot. Paths must be established for members to access the interior of the railroad. And remember, nature (and club members) abhors a vacuum. We must take care not to fill up our access paths with scenery items. Big Foot lives! And he has been known to knock over a thing or two as he tries to navigate his way through the maze of trees, structures, vehicles, and people that we use to decorate our layouts

On the day or days of the set-up, club members will come together to do the work. We unload trailers, cars, trucks, etc., move our materials into the show venue and begin the work. Break out the track, stanchions, power supplies, etc. The most important of every set-up is the track. All joints between the rails must be smooth and tight. Gaps and uneven rails cause derailments, so careful work at this point will ensure the trains stay on the track. All rail clamps must be tight (but not over tightened) to ensure the tracks stay together.

There is one last thing to consider. That is ability. New people to our group might feel that they don't have the ability to set up a railroad, but what they probably lack is confidence and experience. If you can turn a screwdriver, pull the trigger on an electric drill, and pick up small boxes you have the ability to set up our display. You gain confidence and experience by doing. So come on down to our next display and jump right in. If you are not sure how to do something, just ask someone. And most importantly, have fun!

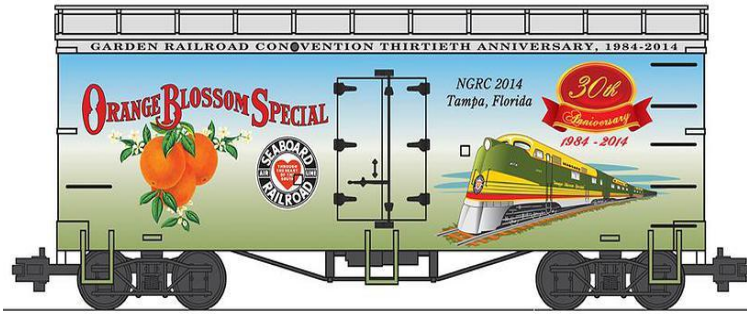


COMING EVENTS

NGRC 2014 TAMPA, FL

MAY 5 – 11, 2014

www.wendysetzer.wix.com/ngrc2014tampa



<http://www.2014cleveland.org/>

The 2014 NMRA National Convention

Cleveland, OH

July 13 - July 19, 2014

NNGC 2014 SEPTEMBER 3-6, 2014



Vendors' links

www.polksgenerationext.com

www.cordlessrenovations.com

www.carlsoncommunicationsllc.com

www.rockymountainlocomotives.com/

www.gscalejunction.com/

www.peoplescale.com/

www.wattstrainshop.com/trains.htm

www.nicholassmithtrains.com/store/

www.wholesaletrains.com

www.charlesro.com

www.trainworld.com/

www.modeltrainsforless.net/Model-RR-Trains/G-Scale-Model-Trains

www.piko-america.com/

www.legacystation.com/index.htm

www.train-li-usa.com

www.gardentexture.com/

www.woodlandscenics.woodlandscenics.com/

www.reindeerpass.com

www.justplanfolkfigures.com

www.accucraft.com

GEORGE'S TRAIN SERVICE

Authorized MTH Service Center (G/O/HO Scale)

Train Repairs and Parts All Gauges and Makes

MTH Proto Sound 2 and Lionel TMCC Upgrades

George Galyo

757-572-4390

Chesapeake, VA

geos.trainservice@cox.net

Buy and Sell Trains

Postwar and Modern

MEMBER NEWS

Bill and Carmen Lancellotti are back in Georgia with their son Robert.

I picked up Roland Smith live steam engine in York, so we got to visit when he stop by to get his engine. We discussed the next anniversary car which needs to be another box or tank car. These types of cars provide more space for artwork. He has a few ideas that he will start working on.

Josh Pinegar, Richard Peterson's grandson, won 2nd place in the Tiger group in his Cub Scout Pinewood Derby. He won most Realistic Car in group. GREAT JOB JOSH!!!

I WILL BE LEAVING MAY 3TH GOING TO KEY WEST, NATIONAL CONVENTION, UNIVERSAL STUDIOS AND SAVANNAH, GA. THEREFORE THE MAY ISSUE OF THE GULL WILL BE JUST THE BASIC. I WILL HAVE PLENTY TO SHARE WHEN I RETURN.

TEYA

Four Full Days

featuring classic streamliner locomotives of the 1930s - 1950s

May 29 - June 1

at the N.C. Transportation Museum Bob Julian Roundhouse



STREAMLINERS AT SPENCER



"Streamliners at Spencer," will be a four-day festival for lovers of streamlined locomotives of the 1930s through the 1950s. These engines will be gathered around the 37-stall Bob Julian Roundhouse for daytime portraits, special operations, nighttime photos and much more. Primarily a photography event, "Streamliners at Spencer" will surely be a rail fan's delight.

CAB COUNT: 19 Units

Two Potomac Eagle Scenic Railroad units will bring the Streamliners at Spencer event to a total of 19 locomotives. The B&O No. 722, an F7(A) unit painted in the colors of the Baltimore & Ohio, and the C&O No. 8016, painted in the colors of the Chesapeake & Ohio are the most recent to be added. More locomotives will be added. Stay tuned!

Other Activities

- Enjoy cab tours inside the available locomotives as a static display.

- Hear speakers and see appearances from some of those within the railroad industry, plus railroad artist Andy Fletcher!



- View railroad industry displays.

- See and experience the latest equipment from Amtrak as well as exploring the Amtrak Exhibit Train with 3 display cars.



- Enjoy access to exhibits at the North Carolina Transportation Museum, including the Historic Bob Julian Roundhouse and Spencer Shops.

- Opportunity to purchase souvenir items and event clothing at our expanded Gift Station.

Ticket Prices and Options

Special Preview Day May 29: 8am - 5pm

\$40/person in advance
\$45/person day of event

See the last units arriving, special behind-the-scenes photo ops and final set up at the Roundhouse.

Celebration at the Station May 29: 5:30pm - 8:30pm

\$20/person, includes admission entertainment and meal

Enjoy this kickoff Southern dinner at the nearby Salisbury Station, with live music, speakers and socializing.

Nighttime Photos

May 29 - 31: 9pm - 11:30pm

\$25 per person per session

View the engines with special nighttime photo lighting around the Bob Julian Roundhouse.

Streamliners at Spencer Day Passes

May 30 - June 1: 8am - 8pm

Enjoy the assembly of locomotives, cab tours, guest speakers, unique pairings and gatherings of the locomotives each day, railroad industry displays, the Amtrak exhibit train, and much more.

COMBO TICKET - All 3 Days

Adults: \$80
Ages 3-12: \$50

DAILY TICKETS - Fri., Sat. OR Sun.

Advance Purchase:

Adults: \$30, Ages 3-12: \$20

Day of Event:

Adults: \$35, Ages 3-12: \$25

BUY NOW!

Purchase your tickets by March 31 to receive a signed poster featuring Andy Fletcher's renderings of all attending locomotives.

STREAMLINERS at Spencer

Bob Julian Roundhouse - Spencer, NC

May 29-June 1, 2014



CONFIRMED AT TRADING LOCOMOTIVES TO DATE 05/17/14
CHECK FOR UPDATES ON NCTM.ORG

Schedule of Events

Thursday, May 29

Streamliners Preview Day: 8 a.m. - 5 p.m.

For a special price, get in on the excitement early with the arrival of the last units, behind-the-scenes spruce up and initial set up at the Bob Julian Roundhouse. It is a unique look at the locomotives that will not be available at any other time during the event.

Celebration at the Station: 5:30 p.m. - 8:30 p.m.

Learn more about the restoration of the event's important locomotives during a kickoff Southern dinner at the nearby Salisbury Station. Enjoy music, speakers and socializing at this beautiful depot on Norfolk Southern's main line.

Nighttime Photo Shoot: 9 p.m. - 11:30 p.m.

View the engines with special nighttime photo lighting around the Bob Julian Roundhouse. Enjoy special arrangements and pairings of the locomotives that will change each night.



Photo from 2012 Norfolk Southern Heritage Unit Family Portrait

Friday, May 30

Streamliners at Spencer: 8 a.m. - 8 p.m.

Watch the locomotives on the turntable while a narrator describes each unit. Every day will have a unique gathering of locomotives around the turntable, and this day features "twins."

Nighttime Photo Shoot: 9 p.m. - 11:30 p.m.

View the engines with special nighttime photo lighting around the Bob Julian Roundhouse. Enjoy special arrangements and pairings of the locomotives that will change each night.



Saturday, May 31

Streamliners at Spencer: 8 a.m. - 8 p.m.

Marvel to the spectacle of historic streamliners on parade. Participants in the event will help to select the line up of units for the afternoon display of locomotives at the turntable.

Nighttime Photo Shoot: 9 p.m. - 11:30 p.m.

A final session of special arrangements around the Bob Julian Roundhouse will take place with our third and final nighttime photo session, concluding the event's after dark activities.

Sunday, June 1

Streamliners at Spencer: 8 a.m. - 8 p.m.

The grand finale features unique gathering of locomotives on display side-by-side and an assembly of the participating locomotives in a single consist.

Receive a 10% discount on your fare when you travel by train to Streamliners at Spencer via AMTRAK.



Travel to Salisbury, NC on Amtrak and visit



May 29 - June 1

Visit ncbytrain.org and use Fare Code: V563. Offer good for travel only on selected dates to Salisbury, NC.

CLICK HERE!

AMTRAK Enjoy the journey.®

PLUS - WE'LL PICK YOU UP!

The N.C. Transportation Museum will provide trolley pick up to and from Salisbury Station, just a few miles from the N.C. Transportation Museum, during the event.

PLEASE NOTE: Salisbury Station trolley pick-up and drop-off excludes the Crescent and the northbound Carolinian.

The Inspiration: Norfolk Southern's 2012 Heritage Unit Family Portrait



The museum's goal will be to bring as many streamlined units together as possible for an event on par with 2012's Norfolk Southern Heritage Locomotive Family Portrait. With just six weeks to plan and execute, that event drew thousands of attendees from 39 U.S. states, the Canadian provinces of British Columbia and Ontario and internationally, from Japan and Austria.

N.C. Transportation Museum Foundation Board President Steve Mersch says, "Our 2012 Heritage Locomotives Family Portrait gave us the chance to showcase 20 brand new locomotives in historic paint schemes to more than 4,000 rail fans. "Streamliners at Spencer" will again provide us with the opportunity to use the unique setting we have with the 1924 Bob Julian Roundhouse and the 57-acre Spencer Shops complex."

Fire Up 611!



The dream is coming true!

The Norfolk & Western Class J 611 Steam Passenger Locomotive Rolls to Restoration May 24

*Fundraising campaign halfway to goal of \$5 million
Restoration must start now to participate in 2015
Norfolk Southern's 21st Century Steam Excursion Program*

Apr. 1, 2014 - ROANOKE, VIRGINIA - The Virginia Museum of Transportation today announced the Norfolk & Western Class J 611 Steam Passenger Locomotive-known affectionately as the Spirit of Roanoke-is ready to head to Spencer, N.C. for restoration. An "All Aboard" send-off party is scheduled for Saturday, May 24, from 10 am to 5 pm.

After leaving the Virginia Museum of Transportation on May 24, the Class J 611 will arrive at the [North Carolina Transportation Museum](#) on or about May 29, 2014. She will be the guest of honor at the museum's [Streamliners](#) event, to be held May 29 through June 1. Restoration work will begin shortly after the event.

The restoration will be open to the public, but with limited viewing. Planned work includes a complete overhaul to meet current Federal Railroad Administration and strict safety guidelines.

"We're pleased to send the 611 on to our fellow train enthusiasts at the North Carolina Transportation Museum where this exciting restoration will get underway," says Beverly T. Fitzpatrick, Jr., executive director of the Virginia Museum of Transportation. "We're grateful for the tremendous amount of support that allows us to reach this step of the program."

The Fire UP 611 Committee of steam locomotive technology experts, business leaders and railroad consultants conducted a feasibility study in 2013. The study revealed that the Virginia Museum of Transportation would need \$3.5 million to restore, operate and preserve the Class J 611. An additional \$1.5 million will be raised as an endowment for the iconic locomotive. Although the original plan called for raising approximately \$3.5 million prior to the start of restoration, the Fire Up 611! Committee and the Museum's Board of Directors decided to move ahead with restoration now that \$2.3 million has been raised. Fitzpatrick cites a tight timeline to participate in Norfolk Southern's 21st Century Steam Program in 2015, Amtrak's return to Roanoke, the momentum of the fundraising efforts and strong results as reasons in support of the decision.

"The restoration will take approximately nine months and needs to begin this spring so we can participate in Norfolk Southern's 21st Century Steam Program in 2015," says Fitzpatrick. "As she travels the Norfolk Southern rail system, our 611 will draw the attention and interest of new donors and fans of the Class J 611 from the region and beyond."

East Coast Large Scale Train Show

Dave and I arrived in York, Pa on Thursday. We did attend the annual LSOL (GardenTrains) banquet at Hoss. Noel Widdifield was host for the evening. There were a lot of new faces at the dinner. It was nice to see some of the old faces and to see how life has been treating everyone. After a half hour of conversing Noel welcome everyone and began the evening program.

First the hat contest. I guess I was the only one who got the memo!



I showed Rob and Adia my hat the day before we left. Rob comment was we must be doing a lot drinking at the banquet in order for me to wear that hat. I informed him we are just a crazy group of folks and we did need alcohol to have fun. Well I won a stage coach with horses which was donated by John Schneider from Just Plain Folks.

Next were the speakers; John Pletcher of Iron Horse Engraving, Vince of VES enterprises and Scott Polk of PolksGeneracioneXt. Scott talked about his new company. He has track for sale and will have several containers coming from China with Aristo Craft product that was already made. He will hopefully have the right to all the molds soon. He will be making some of the older products with different road names starting out. Later he will start making new products. He is very positive about the future of his new company and not having the restrictions he had at Aristo Craft. Dave reminded me about what Bob Maisey use to say about some of their products, "which was they sold product with problem and fixed it later". Scott said he wanted the problem fixed before selling the products.

Several door prizes were given out while we waited for our dinner. Unfortunately they didn't have enough waiters or help in the kitchen so quite a few people receive their food really late. The manager gave them 50% off their meals and 25% off the rest. Away fun was had by all!! So back to the hotel to rest for the opening of the show on Friday.



Well, the show opened at 9am. The first thing I purchased was the show car. Dan & Flora Vega of Starr Hobby were selling the show cars in the lobby. They run out two hours after opening and started taking orders for a second run. The second thing on Dave and my agenda was David Bodnar clinic on 3D printers. It was very informative and fun. His full power point is on his website. <http://www.trainelectronics.com>. I attend Axel Tillmann clinic using Wi-Fi Smartphone, tablet and computer to control your trains and accessories. This is a new system which is similar to the Revolution. You would have receives in each engine and an APP on your Smartphone, etc. I know for now I will stay with the Revolution that I haven't installed yet.

After sitting for these clinics, it was time to see what new items vendors had for sale. Jerry & Etta Burch and Eddie & Lisette Diehl were seen several times carrying a lot of bags. Dave told me he saw Bob & Laura Gifford.

I stopped by Iron Horse Engraving to see the three new East Broad Top passenger cars. They are real nice cars and the inside fully detail. They are pricy. The couplers and truck are additional cost.

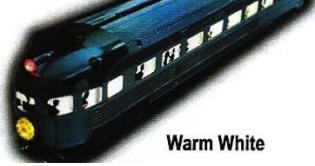
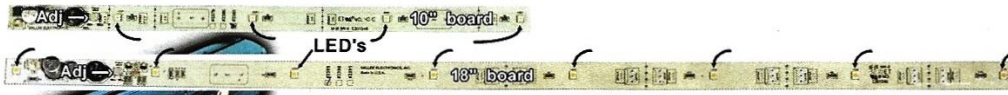
John Schneider had several new figures and sets of figure parts so you can assemble them in different poses. I did buy a set and thank him for his donation of the Stage Coach that I won.

On the next page are a few of the new items I found.



This new LED Lighting was from Dallee Electronics, Inc. Dave actually brought six 18" warm white boards for his B&O heavyweight passenger car. I am looking forward to seeing them run. Checkout the website: www.dallee.com

LED Lighting Cool, low power, high Intensity, regulated LED lighting strips. Fits HO and larger. Adjustable length from 2" to 18", depending on unit selected, both only 1/2" wide! Variable regulated intensity. After initial illumination voltage, which is quite low, your lights will remain constant with changes in track voltage. Illuminate your cars to the intensity and hue desired. Dim for sleepers, bright for coaches. Power consumption varies with intensity. Input power from AC, DC, DCC, TMCC, DCS, or other. Wide 120 degree viewing angle thus allowing for illumination in all directions plus the LED's are rated for 100,000 hours of use! Typical light output for Warm and Cool units are a blinding 74 lumens per board! Amber is a bit less. Add super a cap to the board to obtain up to 30 seconds of lighting after power is removed (varies with intensity setting). You can also use these to illuminate your buildings, roundhouse, train stations, glass show cases, marquis, etc. Many applications!



Warm White

Length	Warm#	Cool#	Amber#	\$ each*
2 → 10"	2379	2380	2381	\$34 ⁹⁵
9 → 18"	2389	2390	2391	\$54 ⁹⁵

Warm - std lamp, Cool - florescent light / modern cars,
Amber - Kerosene lamp look for older cars.



Colorado Model Structures had two new building Tennyson Ice House and Market Street with or without Commercial



PENNSYLVANIA T-1 4-4-4-4, LIVE STEAM
ATLS - Accucraft Live Steam Limited www.accucraft.com

Hey Linwood this is another great locomotive for you to buy for my inherent collection!!!!



Anyway, the show was full of happy buying young and old customers both days. The clinics to me were better on Friday. I did find two new custom painted Heritage engines on Southeastern Pennsylvania modular layout. The lobby layout by SVGRC and the Maryland group did a great job as usually. Their three ring shamrock was a big hit. I did get a copy of the Maryland layout.



Dave and I attended the show again on Saturday. Jerry & Etta spent the day shopping for Dept 56 items for their collection. Eddie & Lisette spent their day in Adamstown shopping. I had some friends from Buffalo, NY and Ohio at the show so I spent the day with them. Dave went back to the hotel to rest about 12:30. I did some more shopping, took pictures and talked to a lot of new people. The show ended at 4pm and I went back to the Holiday Inn with my friends. We met Dave at Lyndon Diner at 5:30pm for dinner. We ate and talked until 8:30. Well my trip to Cleveland for the NMRA convention now includes us going to Buffalo and Niagara Fall. My friends from Ohio said I was only 3hrs away so I might as well go home that way. And the hotel room is free!

Well I don't know about anybody else, I had a GREAT weekend. A hotel room to myself, hot baths and quiet was just a little bit of heaven I needed. I got to see my friends and meet new ones. The conversation was great and lots of new things to try. Now I am ready to get my layout cleaned up and run my trains. Harry Hartman did a great job on the 20th East Coast Large Scale Train Show.

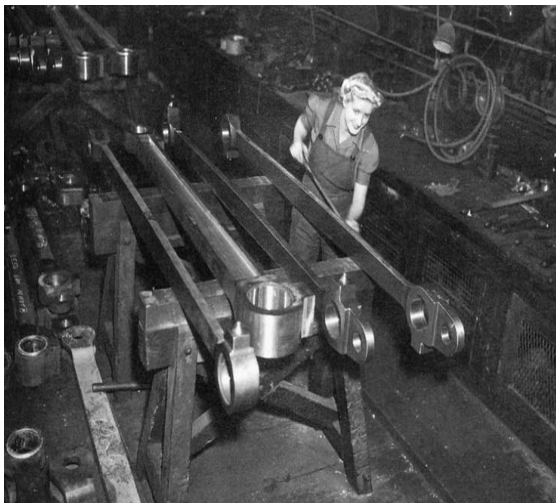
Checkout: gardentrains.com for more pictures, articles and videos.
Also USAT G Scale 2014 ECLSTS videos on YouTube

Teya

Women in Railroading



Clinton, Iowa. April 1943. "Chicago & North Western Railroad. Women wipers at the roundhouse cleaning one of the giant H-class locomotives." In the red bandanna: Marcella Hart, seen here in a few others. 4x5 Kodachrome transparency by Jack Delano for the Office of War Information.



Women today still do many of the jobs they took over during the war. Railroad mechanic is not one of them. But this greasy woman defied tradition to keep the Long Island Rail Road rolling. In government posters, bicep-popping women were shown in hopes of breaking stereotypes and expanding the workforce in vital defense industries.

Levi Strauss, the inventor of riveted pants, never called them jeans; he preferred "waisthigh overalls." These women railroad workers are in his full-length, or overall, overalls. >>>>

Busch [Bush] Terminal. Women Laborers Seated on Front of Engine in Railroad Yard by The U.S. National Archives



Dorothy Lucke, employed as a railroad wiper. Photographed by Jack Delano in April 1943



African American women working on a railroad crew. They perform track maintenance in near-zero weather in Chicago. They fill jobs vacated by men entering the military during World War II. Nov. 26, 1943. (CSU_ALPHA_1085) CSU Archives/Everett Collection



Averting Disaster

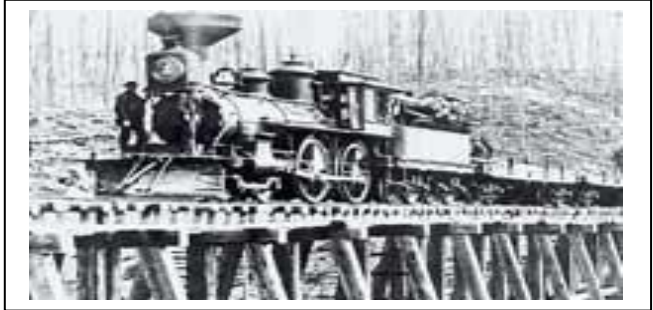
Kate Shelley

Fifteen-year-old Kate Shelley was helping her mother clean up after dinner as the tempest of July 6, 1881, raged outside their farm near Boone, Iowa.

Kate listened carefully for sounds of distress from the barn. If Honey Creek continued to rise, the animals could be in jeopardy.

Frequent lightning flashes enabled her to glance out the window and reassure herself that all was well.

When she heard something clanking in the distance, Kate remembered the railroad track running along the creek. On stormy nights, a railroad crew would check the tracks ahead of the late-night train.



Suddenly, Kate heard a loud crack followed by the sound of timbers creaking and snapping and a bell ringing wildly. Kate immediately realized that the bridge had collapsed and the engine had fallen into Honey Creek! Kate's mother remained with the children while Kate ran out to see if the men were safe.

Wet and out of breath, Kate emerged from the woods where the railroad crossed the creek. She gasped. The tracks extended out over the creek and ended abruptly.

Leaning over with her lantern held high, Kate called through the howling wind. Faint replies told her there were survivors, but they were trapped amid the rising waters.



Turning on her heels, Kate ran along the track toward the station at Moingona. She had not run far when she came to the trestle spanning the Des Moines River. Without wasting a moment, she began to crawl across. Grasping the slippery rails and ties as she advanced, Kate could see the raging waters rushing beneath her. Cold, wet, and weary, she made it to the other side and continued running. She had to reach the station! Several wide-eyed attendants looked up as she burst through the door. The drenched girl exclaimed that the bridge was out and collapsed on the floor.

The men removed Kate's wet hat and coat and lifted her to a chair. When she was able to speak again, she explained that the railroad crew was trapped in the rising creek and asked if it was too late to stop the midnight passenger train.

Several men grabbed rain gear and headed into the night to rescue the crew trapped in Honey Creek. Another man grabbed a lantern and ran out onto the platform. If the train had already passed Ogden, he would signal it to stop. The telegraph operator jumped to his keypad and began tapping: STOP EXPRESS...BRIDGE OUT...STOP EXPRESS. He hoped that the Ogden Station would hold the train at its last scheduled stop.

Rewards of Alertness



Maneuvering a lone engine to the edge of Honey Creek, the rescue party reached the wreck and successfully retrieved the weary survivors. The midnight express, carrying over two hundred passengers, was intercepted, and scores of lives were saved that night because of one girl's alert initiative.

Kate Shelley was recognized for her heroism with a medal from the state of Iowa, a scholarship, a lifetime railroad pass, and other honors. A Chicago newspaper raised money to pay off the Shelley's farm mortgage, and the bridge rebuilt over the Des Moines River in 1901 bears the name Kate Shelley.

Olive Wetzel Dennis



Olive Wetzel Dennis was born in Thurlow, Pennsylvania on November 20, 1885. She grew up in Baltimore. She was an engineer whose design innovations changed the nature of railway travel.

She earned a Bachelor of Arts degree from Goucher College in 1908 and a Masters degree in mathematics from Columbia University the following year. After teaching at Wisconsin, she decided to study civil engineering and studied at Cornell University. In 1920, she became only the second woman to obtain a Civil Engineering degree from Cornell. She was hired that year as a draftsman by the B & O Railroad to design bridges. The following year, the President of the railroad observed that, since half of the railway's passengers were women, the task of engineering upgrades in service would best be handled by a female engineer. Dennis became the first "service engineer" when the B. & O. created the position. Engineering historian Kurt H. Debus described her as the first service engineer in America. She was also the first female member of the American Railway Engineering Association.

Dennis traveled an average of 50,000 miles a year, and her work often included sitting up all night in coaches trying out seats or testing new mattresses aboard Pullman cars. She taste and evaluated dining car food, which led to the development of lighter menus. She designed and patented an individually operated ventilator that was placed in each window and allowed fresh air to enter without causing a draft.

After studying refrigerator cars in 1928, Dennis worked with railroad mechanical personnel to develop air conditioning, which resulted in the B&O's first air-conditioned trains in 1930. She also was involved in technology for fuel-efficient engines and was instrumental in linking airplane and train schedules to make traveling easier for passengers.

Among the innovations that Ms. Dennis introduced on passenger trains were seats that could partially recline; stain-resistant upholstery in passenger cars; larger dressing rooms for women, supplied with free paper towels, liquid soap and drinking cups; ceiling lights that could be dimmed at night; individual window vents (which she patented) to allow passengers to bring in fresh air while trapping dust; and, later, air conditioned compartments. Other rail carriers followed suit in the years that followed, and buses and airlines in turn had to upgrade their level of comfort in order to compete with the railroads.

"No matter how successful a business may seem to be," she said, "it can gain even greater success if it gives consideration to the woman's viewpoint." Although the changes were not enough to save the passenger rail industry in America, Ms. Dennis' unique perspective as a traveling woman with training as a technical engineer influenced the travel industry nationwide

In 1940, the Women's Centennial Congress named Dennis as one of the 100 outstanding career women in the United States. She retired in 1951 and died in Baltimore in 1957. She was a true pioneer.



To My Fellow Train Aficionados:

I am thrilled to let all of my friends out in the train universe know that--as of April 1st, 2014--I will be starting a new company called **MD Trains** to service all of your train needs! After the closing in February, I took a long, hard look at the hobby train industry and how I wanted to be involved in it. During that time, many of you asked me whether I was going to start selling again. After some soul-searching, I realized how much I love the hobby and how much I enjoy working with all of you, so I decided to take the plunge again and created MD Trains. **MD Trains** will be a full-service shop, able to be reached over the phone or online 6 days a week. A network of colleagues and I will provide service and installations, as well as the customer service you have come to expect from me. Listed below is a sample of the companies we will be carrying in the new store on Day One; more will be added every month. So give me a call and let MD Trains prescribe the right train for your needs!



No Joke! 5% off your first order between April 1st and Easter!

M.D. Trains is offering **5% off your first order** (shipping not included) if you "Like" us on Facebook or sign up for our new **Coupons & Special Offers mailing list!** This great offer runs from our **Opening Day (April 1st) to Easter (April 20th)**. Here's what you need to do:

- 1) **Click Here to go to our Facebook page** and click "Like." Once you've "Liked" us, click on "Special Offers" on Facebook and follow the instructions.
or
- 2) **Click Here to Sign Up for our Coupons and Special Offers mailings.** Once you fill out the form, you will receive your 5% Off code.

After you've "Liked" us on Facebook or signed up for our new mailing list, you can use the code to get 5% off anything on our site. Go ahead and start shopping! You will enter the code at check out and take advantage of huge savings on some outstanding garden railway products!

Regards,

RAILROAD QUIZ

DEC 11, 2013 JBH

1. Who was the leading actor in each of the following 'train' films?
 - a. North by Northwest
 - b. Von Ryan's Express
 - c. The Train
 - d. The General
 - e. Breakheart Pass
 - f. The Cassandra Crossing
2. The following words are from which 'train' songs?
 - a. I ain't got time to take a fast train
 - b. And I serve on the Danville train
 - c. Dinner in the diner, nothing could be finer, than to have your ham an' eggs in Carolina
 - d. Fie Fi Fiddly I O
 - e. Well the train I ride on is 100 coaches long, you can hear the whistle blow a hundred miles
 - f. Look a yonder comin'
 - g. And the sons of Pullman porters and the sons of engineers ride their fathers magic carpets made of steel
 - h. Get your bags together, go bring your good friends too
 - i. The next stop we make will be England
3. Which rail station has a record 67 platforms?
4. Which of the following is the current successor to the Penn Central Transportation Co.?
 1. Pennsylvania Diversified Holdings, Inc.
 2. American Financial Group, Inc.
 3. General Transportation & Shipping Co.
 4. Jointly-owned by Norfolk Southern and CSX
5. In song, who serves on the Danville train?
6. What was 'hobo' singer Lecil Travis Martin's stage name?
7. On what train is Mr. Ratchett, or Cassetti, murdered?
8. The French high speed trains are called TGV's. What do the letters TGV stand for?

Answers

1.
 - a. Cary Grant
 - b. Frank Sinatra
 - c. Burt Lancaster
 - d. Buster Keaton
 - e. Charles Bronson
 - f. Richard Harris
2.
 - a. The Letter (Box Tops)
 - b. The night they drove Old Dixie down (The Band)
 - c. Chattanooga Choo Choo (Glen Miller)
 - d. I've been working on the railroad
 - e. Nine Hundred Miles (Woody Guthrie)
 - f. Orange Blossom Special (Johnny Cash)
 - g. City of New Orleans (Ario Guthrie)
 - h. Peace Train (Cat Stevens)
 - i. Love Train (O'Jays)
3. Grand Central Terminal - New York
4. #2 - American Premier Underwriters in March 1994, absorbed by American Financial Group, Inc. In 2006, assets sold to Argent Ventures
5. Virgil Caine ("Virgil Caine is my name and I serve on....")
6. Boxcar Willie
7. On the Orient Express (Murder on the Orient Express)
8. Train a Grande Vitesse